

# Bulky Pickup Service Scheduling & Set-Out Instructions



1324 Paddock Place  
Woodland, CA 95776



## Upcoming Pickup Dates

- February 11
- March 11
- April 8
- May 6
- June 3

Please see reverse side for scheduling instructions.

## Why Wait?

Got a mattress or box spring you need to recycle? Residential customers can bring these items to the Yolo County Landfill at no charge.



## Household Hazardous Waste

Residents can take Household Hazardous Waste (HHW) to the Yolo County Landfill every Friday or Saturday from 7:30 a.m. to 3:30 p.m. Call 1-800-728-6942 or visit [yolocounty.org](http://yolocounty.org) for more information.



## What's Not Acceptable

Tires, construction debris, medical waste and household hazardous waste are not acceptable. Please indicate items to be picked up when booking appointment.

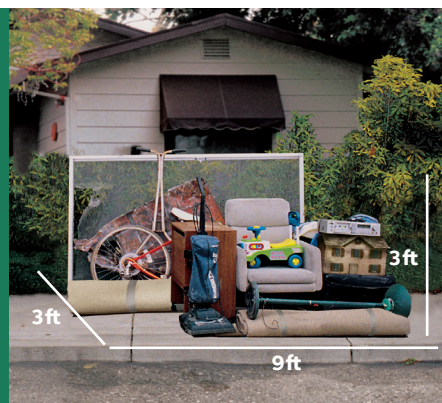
## Learn More

Call (530) 795-1201 to make an appointment. For information on services included with your account go to [sacramentovalley.wm.com](http://sacramentovalley.wm.com)

## Organize for Safe Pickup

Collections limited to 4 cubic yards of bulky items or 5 cubic yards of green waste. Prepare items so they may be safely lifted by two people.

See reverse side for acceptable items and proper set-out instructions.



# Bulky Pickup Set-Out Instructions

Please Observe These Guidelines for the Safety of Our Drivers

- Call (530) 795-1201 one week before desired pickup date to request service (see front side for available pickup dates).
- Items must be within 5 feet of the curb by 6 a.m. on your collection day.
- Residential customers can request up to 4 cubic yards of large bulky items or 5 cubic yards of green waste per pickup.
- Unacceptable materials will not be collected.

Pickup is limited to items that can be safely lifted into a collection vehicle by two people.

## 4 Cubic Yards of Large Bulky Items



Appliances, Furniture  
(\$44 charge for each  
item that requires  
coolant removal)



Mattress or  
box springs



Scrap metal,  
cardboard  
(flattened & bundled)



Computer monitors,  
CPUs, TVs, or  
consumer electronics

## OR 5 Cubic Yards of Green Waste



Bagged (paper bags/compostable only) or  
boxed plant debris, branches, clean wood.  
**Cannot Exceed 5 Cubic Yards**

## Acceptable Bulky Items

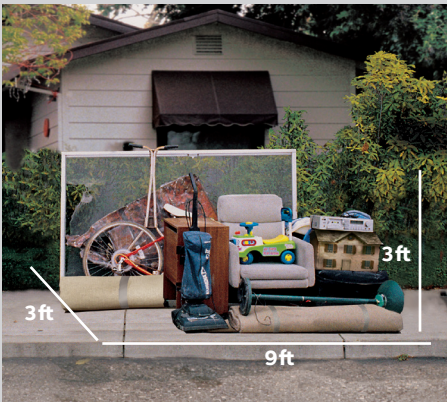
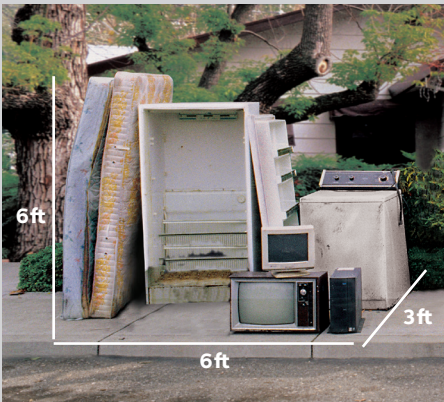
- **Household Appliances**  
(refrigerators, ranges, washers, dryers, water heaters, and dishwashers)
- **Furniture**
- **Carpets**
- **Large Household Goods**
- **Lawn and Garden Equipment**  
(drained of fluids)
- **Bicycles**
- **Scrap Metal**
- **Cardboard**
- **Computer Monitors**
- **CPUs**
- **Televisions**
- **Consumer Electronics**
- **Mattresses**

## Acceptable Green Waste Items

- **Tree Limbs**
- **Green Plants**
- **Dead Plants**
- **Brush**
- **Garden Trimmings**

## Examples of Proper Set Out of 4 Cubic Yards of Large Bulky Items

Any materials outside of 4 cubic yards are subject to an additional fee.  
Items must be able to be safely lifted by two people.



**Bulky Waste does not include HHW, and must be able to be safely lifted into a collection vehicle by two people.**



No item over 75 pounds  
(except appliances and select  
furniture)



No Hazardous or Medical Waste  
Need More information on HHW disposal?  
Go to [yolocounty.org](http://yolocounty.org) and search landfill.



No Tires, Rocks, Dirt or Concrete



(530) 893-4777